

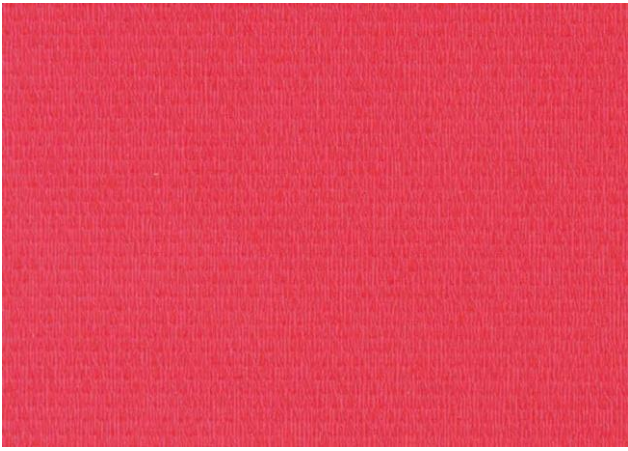


*TVOC AT 28 DAYS



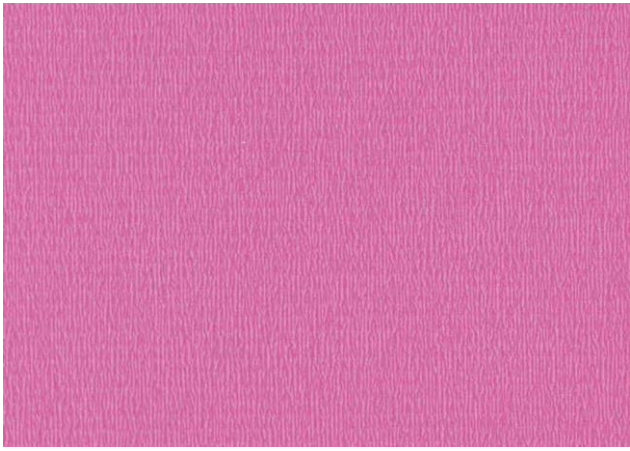
*except recycled content





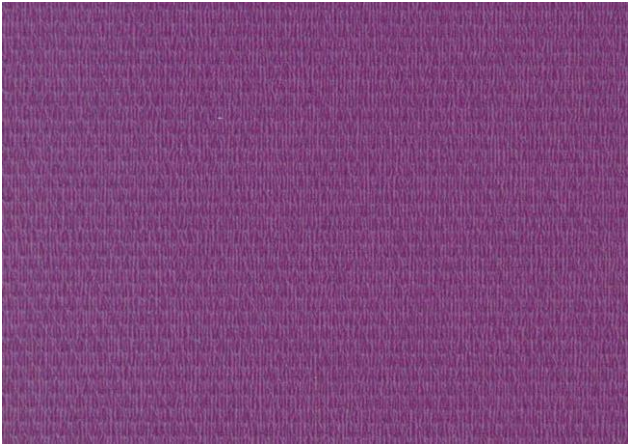
Cherry

27036010



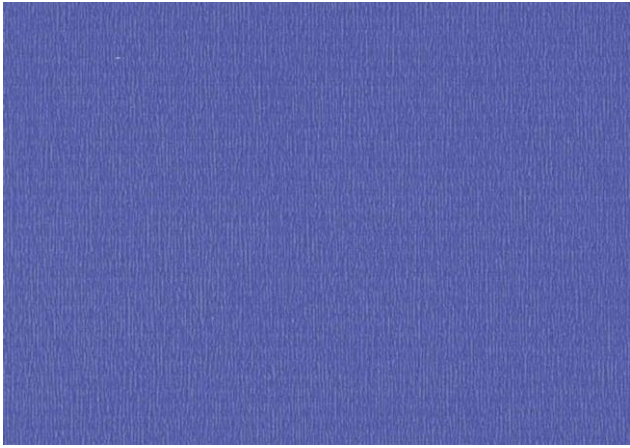
Geranium

27036009



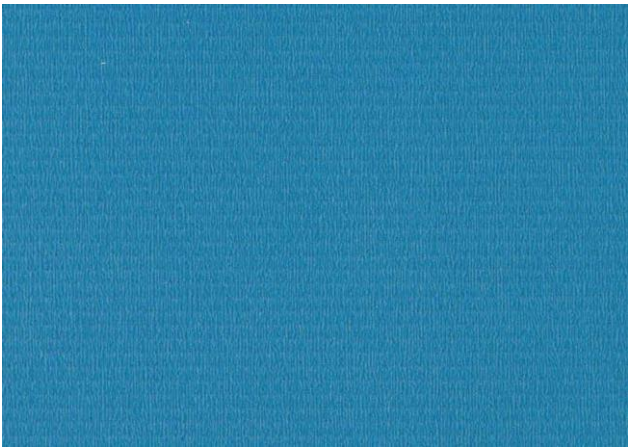
Lavender

27036008



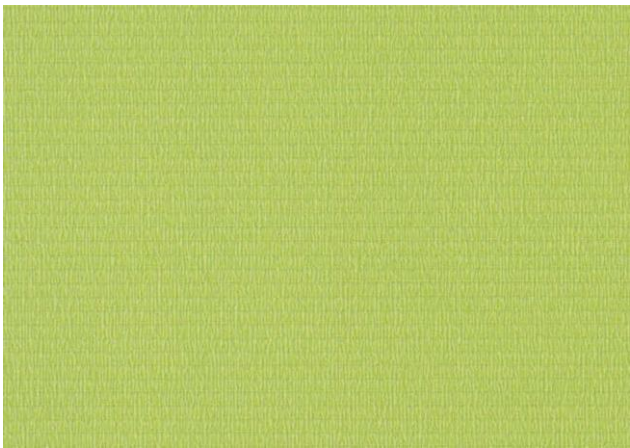
Marine

27036013



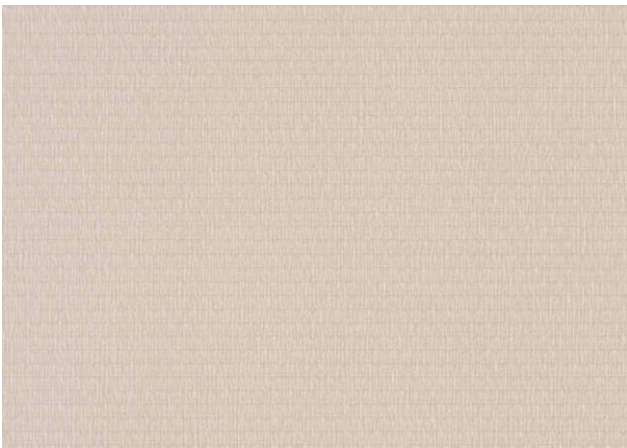
Aqua

27036012



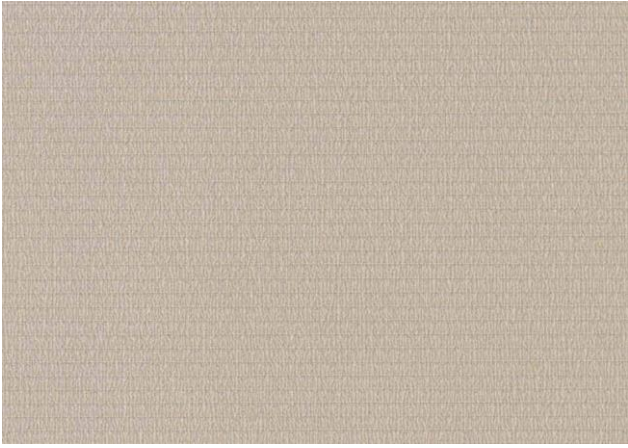
Lime

27036011



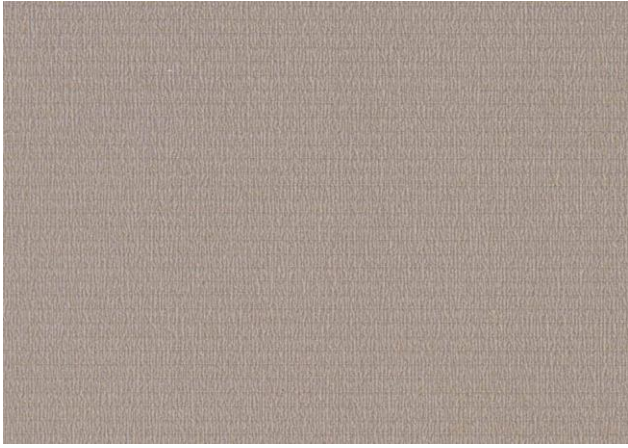
Cream

27036006



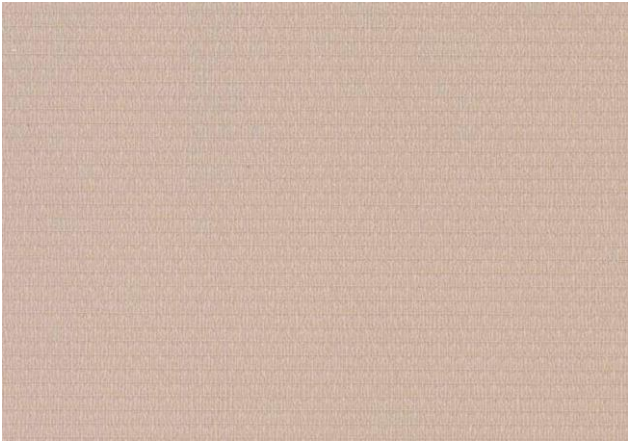
Beige

27036003



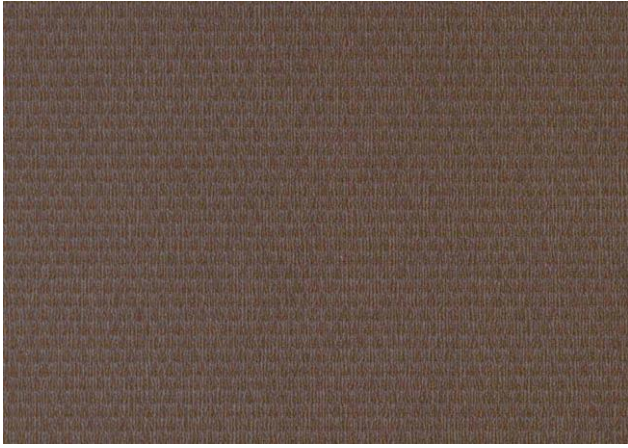
Fawn

27036005



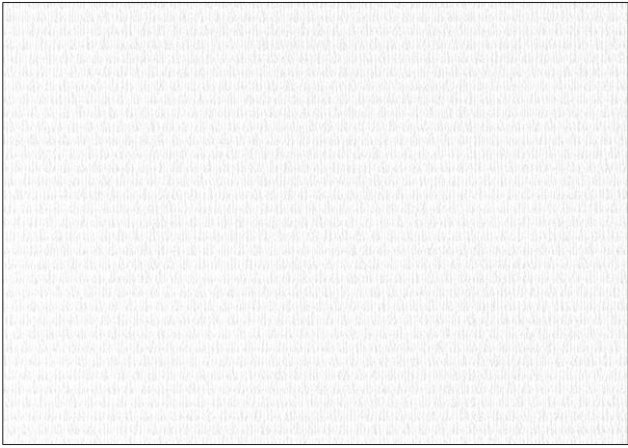
Camel

27036004



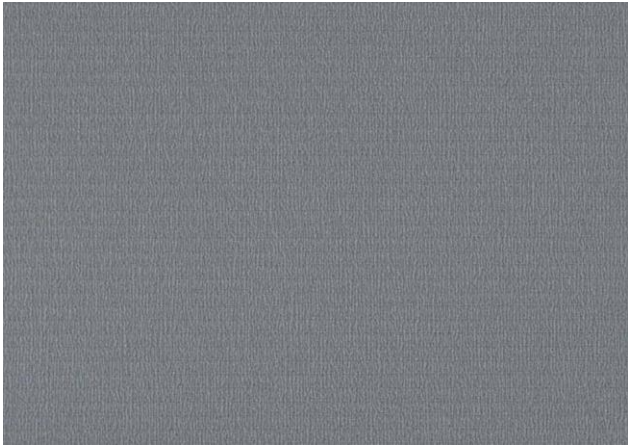
Chocolate

27036007



Snow

27036000



Smoke

27036002



Charcoal

27036001

Vinyl Collection

**EXCLUSIVE
200**

- › Improved indoor environment and air quality
- › Trendy designs
- › Easy installation and maintenance

- *Extremely resistant to wear and tear*
- *Unique new technic mechanical embossing over rainbow colours rendering just like a polo knit!*



EN 426	EN 434	ISO 105/B02	Chemical resistance	EN 1815	EN 660-2	Recyclable
4 + 3 + 2	≤ 0.40%	≥ 6	OK	≤ 2Kv	T	OK



EN 685 Class of use Residential	EN 685 Class of use Commercial	EN 685 Class of use Industrial	EN 428 (mm)	EN 429 (mm)	EN 430 (kg/m ²)	EN 426 (m)	EN 433 (mm)	EN 13501-1	ISO 717/2	EN 425	DIN 51130	EN 12524
			ca. 2.00	ca. 0.40	ca. 2.15	ca. 25	≤ 0.10	B ₁ -s1	ca. 13 dB	OK	R10	0.02 m ² K/W

suitable for



Exclusive 200 - FABRIC CONCEPT - 27036 63 000
Although the utmost care is taken, the data here given could be imprecise and liable to modifications of a technical nature. In its strive to improve its floor solutions, Tarkett reserves the right to modify their technical specifications, colours and materials at any moment and without prior notice.